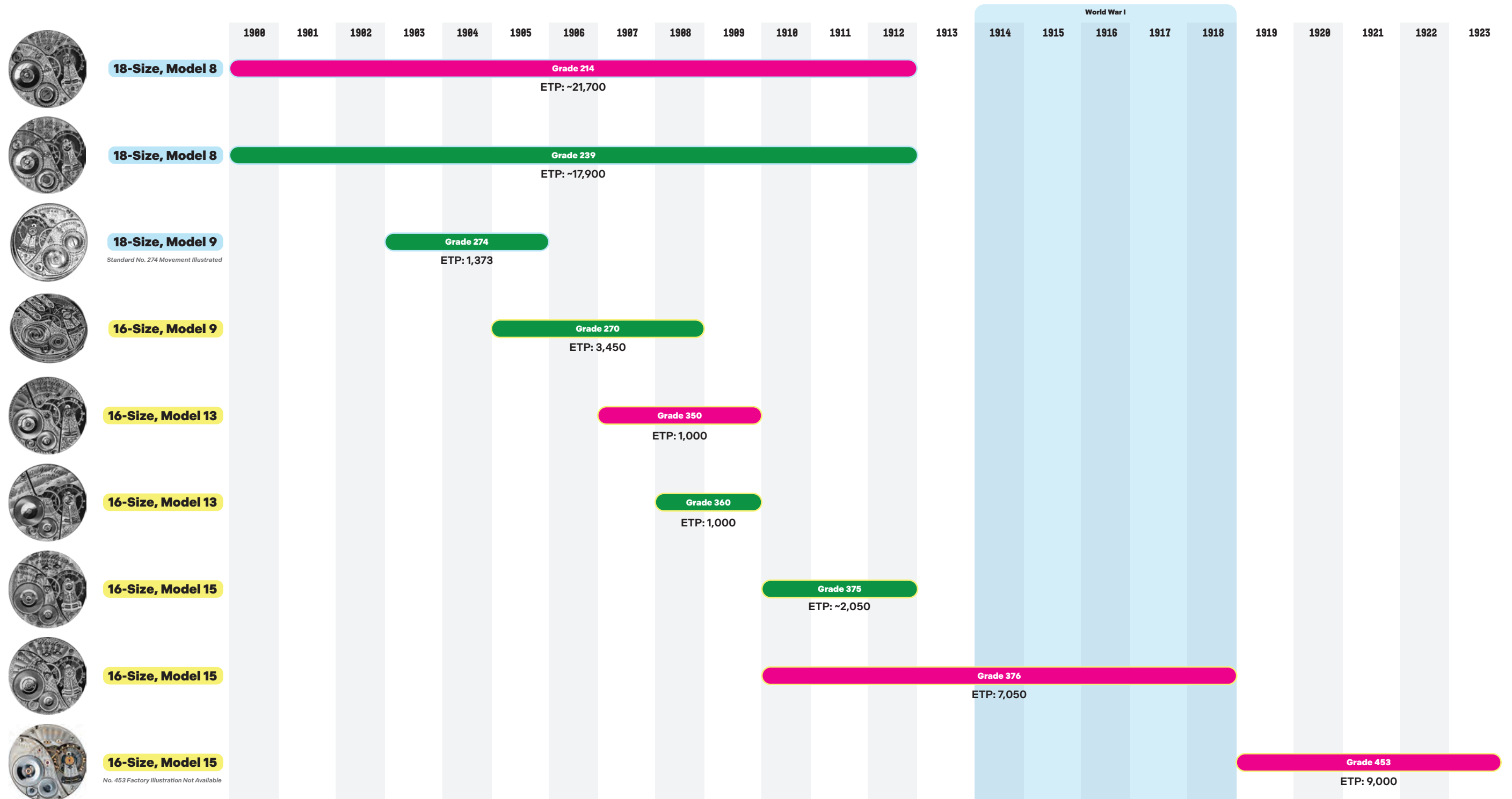


ELGIN NATIONAL WATCH COMPANY

Veritas Grade Production

Based on the Elgin Factory Grade Number Classification System



18-Size

16-Size

ETP: Estimated Total Production

~: Indicates Mixed Run Production Has Been Approximated

21 Jewels

23 Jewels

Estimated productions dates are expected to be accurate within a tolerance of +/- 3 years due to factory production habits



©2023 Pocket Watch Database
CC BY-SA 4.0
Attribution-ShareAlike 4.0 International